

PLAZA MIDWOOD

# COMMONWEALTH

CHARLOTTE, NC







# CONTENTS

**7 BUILDING FACTS**

**9 ON-SITE RETAIL  
& AMENITIES**

**13 STACKING PLAN  
& FLOOR PLANS**

**31 LOCATION**





# DISCOVER A UNIQUE RETREAT, WHERE MODERN MEETS HISTORY







# PROJECT FEATURES

Located in the heart of Plaza Midwood, Commonwealth emphasizes the community's unique character and vibrancy while striving to be a place for connection and socializing.

Revitalizing the neighborhood with upscale retail, community events, green space, and modern office space – Commonwealth is the new chapter for the dynamic Plaza Midwood neighborhood.



## OFFICE

**400K**

Total SF of Class A Office

**135K**

SF Office Currently Built

## RETAIL

**100K**

Total Square Feet  
of Retail

## MULTI FAMILY

**383**

Class A  
Residences

## PARKING

**3/1,000**

Structured,  
Covered Parking



# ABUNDANT RETAIL



In a neighborhood already known for its eclectic mix of local cafes, award-winning restaurants, breweries and charming boutiques, Commonwealth adds to that an additional 100,000 square feet of retail and restaurants. Along with community greenspace and ample covered parking, room for pop-ups and maker spaces to traditional storefronts, we've got a wide variety of options to suit all tenant needs.



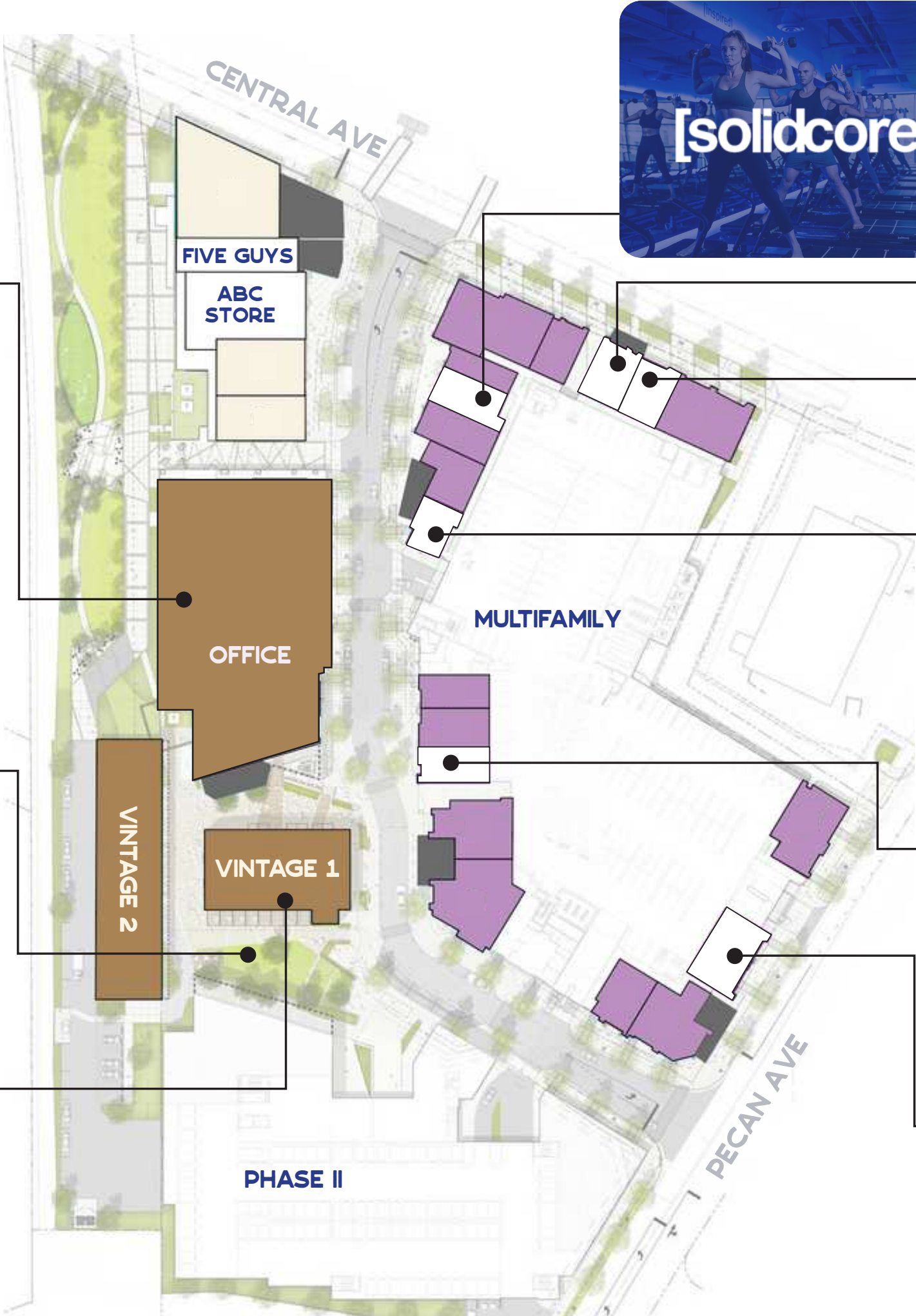
**VINTAGE 1  
ROOFTOP TERRACE**



**COMMUNITY GREENSPACE**



# ON-SITE RETAIL





# STACKING PLAN

FLOORS	DETAILS
FLOOR 7	ROOFTOP <small>TERRACE</small>
FLOOR 6	28,571 RSF
FLOOR 5	28,571 RSF
FLOOR 4	29,346 RSF <small>TERRACE</small>
FLOOR 3	29,395 RSF <small>TERRACE</small>
FLOOR 2	28,020 RSF <small>TERRACE</small>
FLOOR 1	LOBBY & RETAIL



UPTOWN  
VIEWS



MULTIPLE  
TERRACES



BIKE  
STORAGE







OFFICE LOBBY



OFFICE CONFERENCE



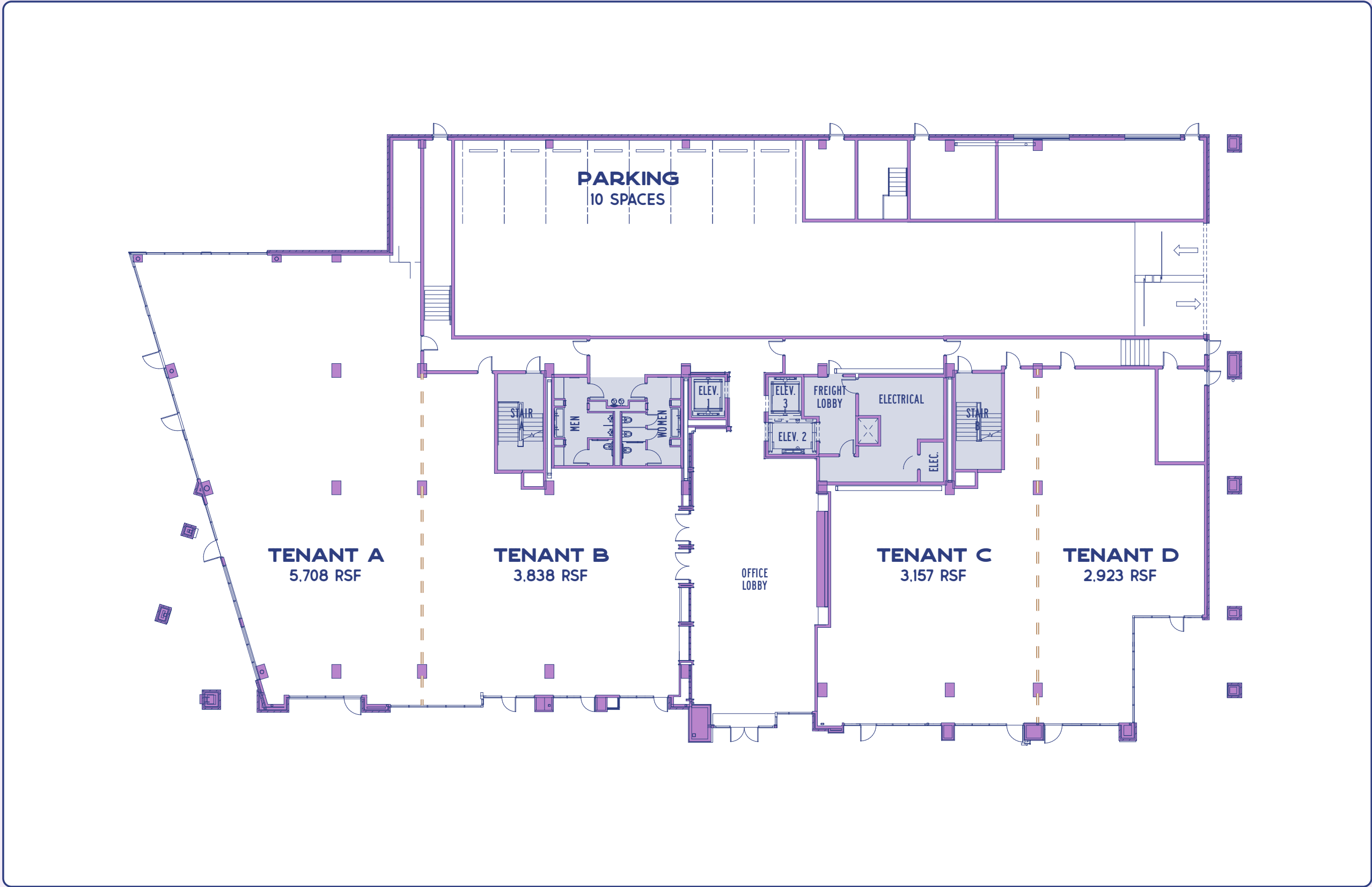
ROOFTOP TERRACE



OFFICE INTERIOR

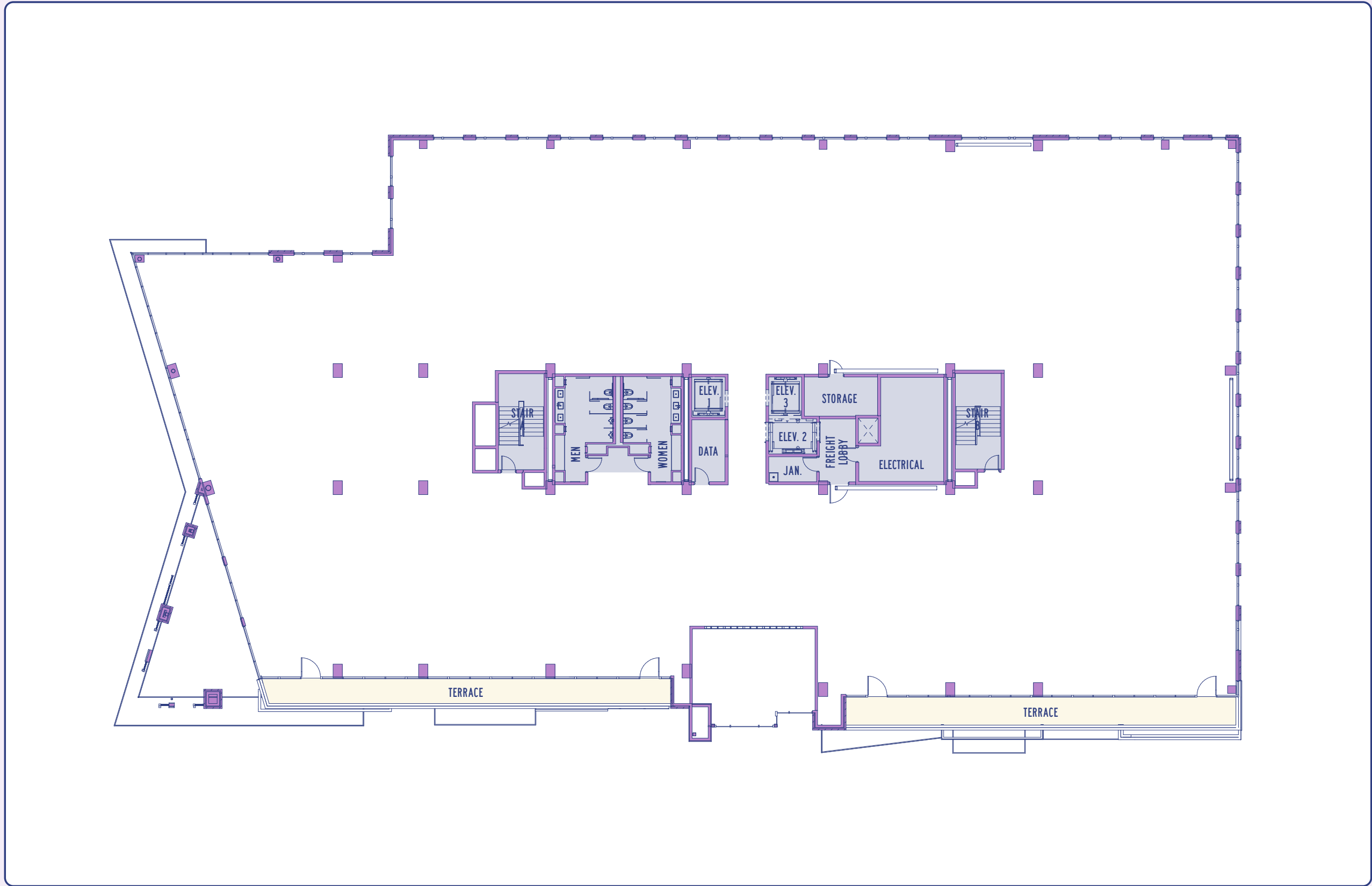


LEVEL 1 | LOBBY & RETAIL



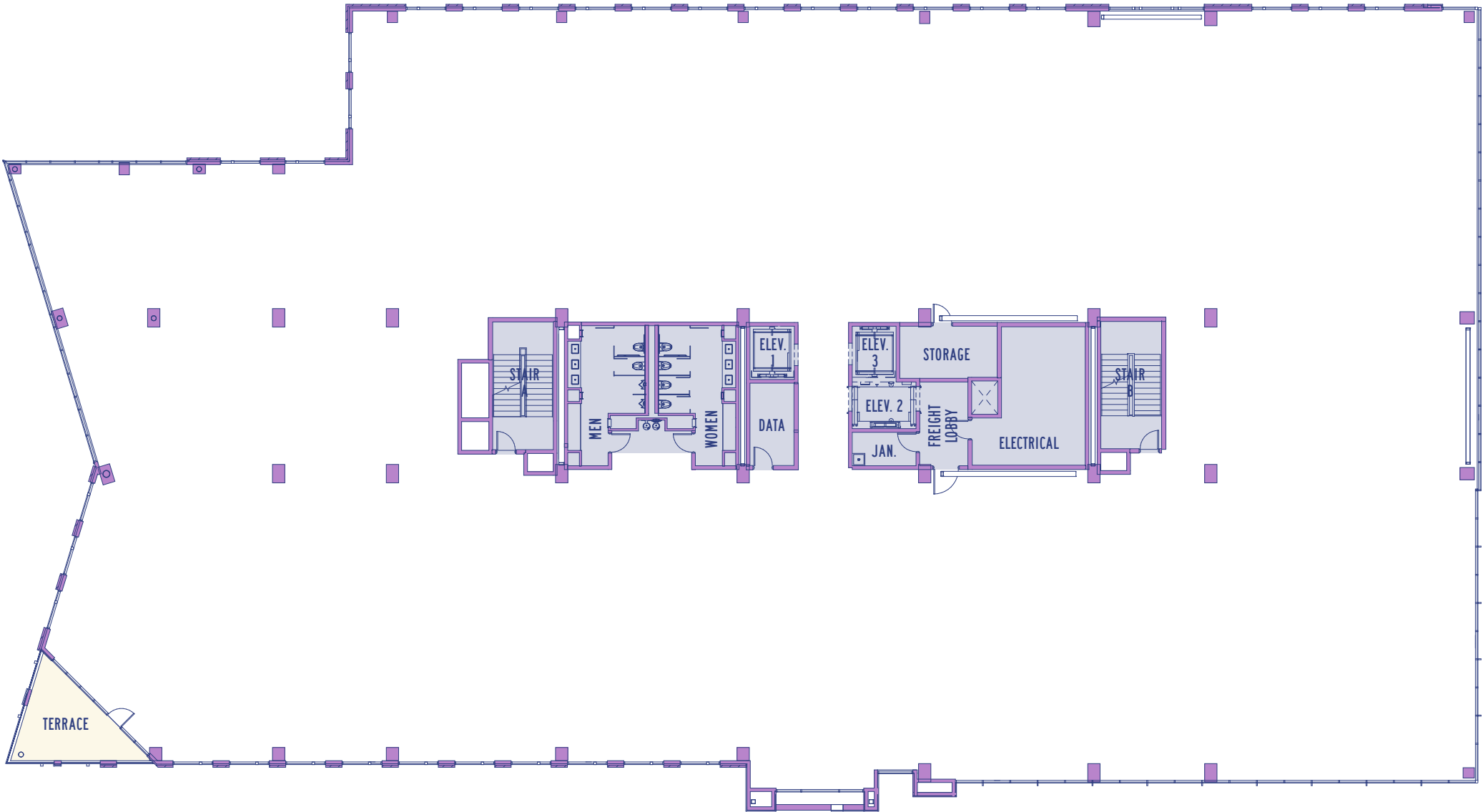


LEVEL 2 | 28,020 RSF





LEVEL 3 | 29,395 RSF



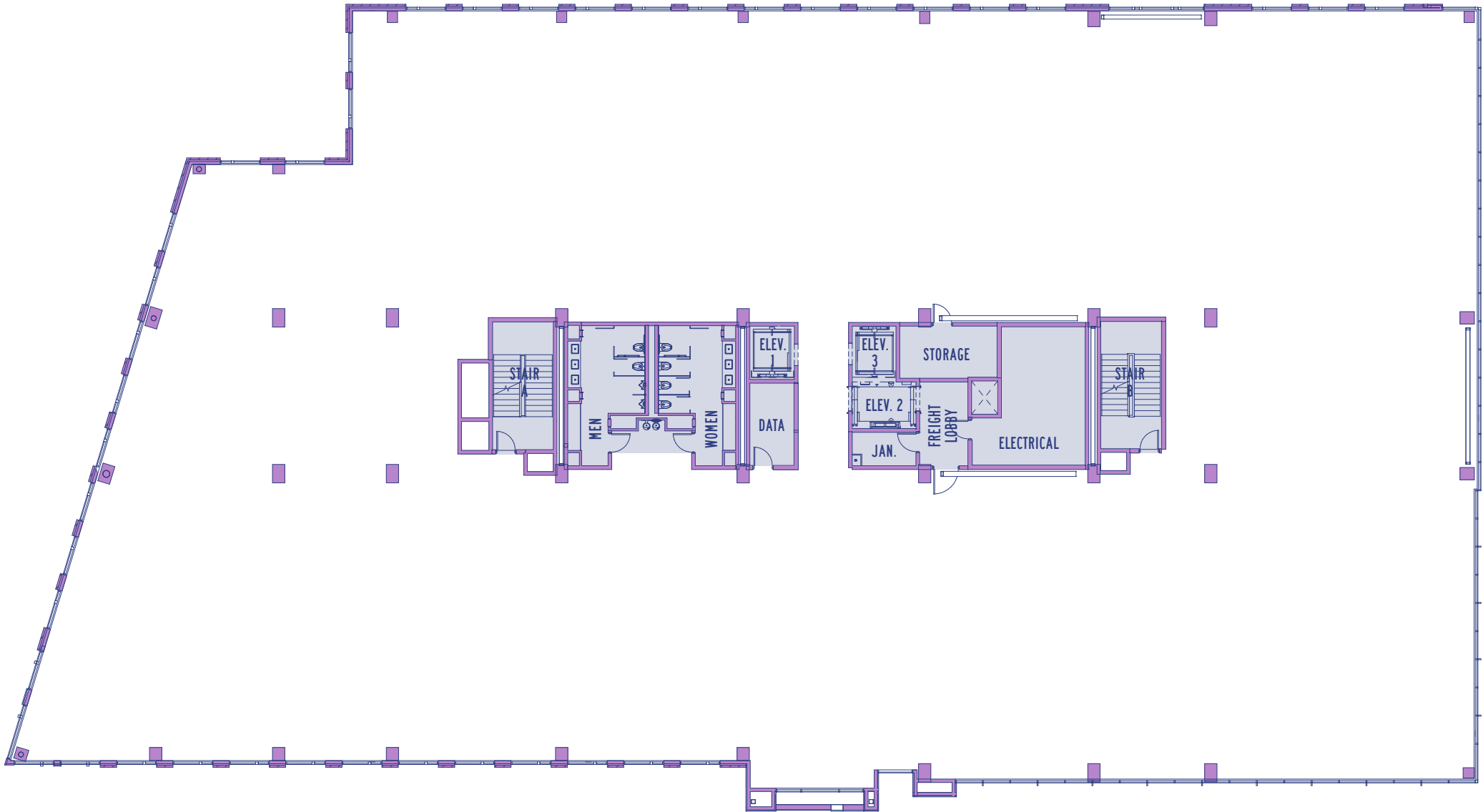


LEVEL 4 | 29,346 RSF





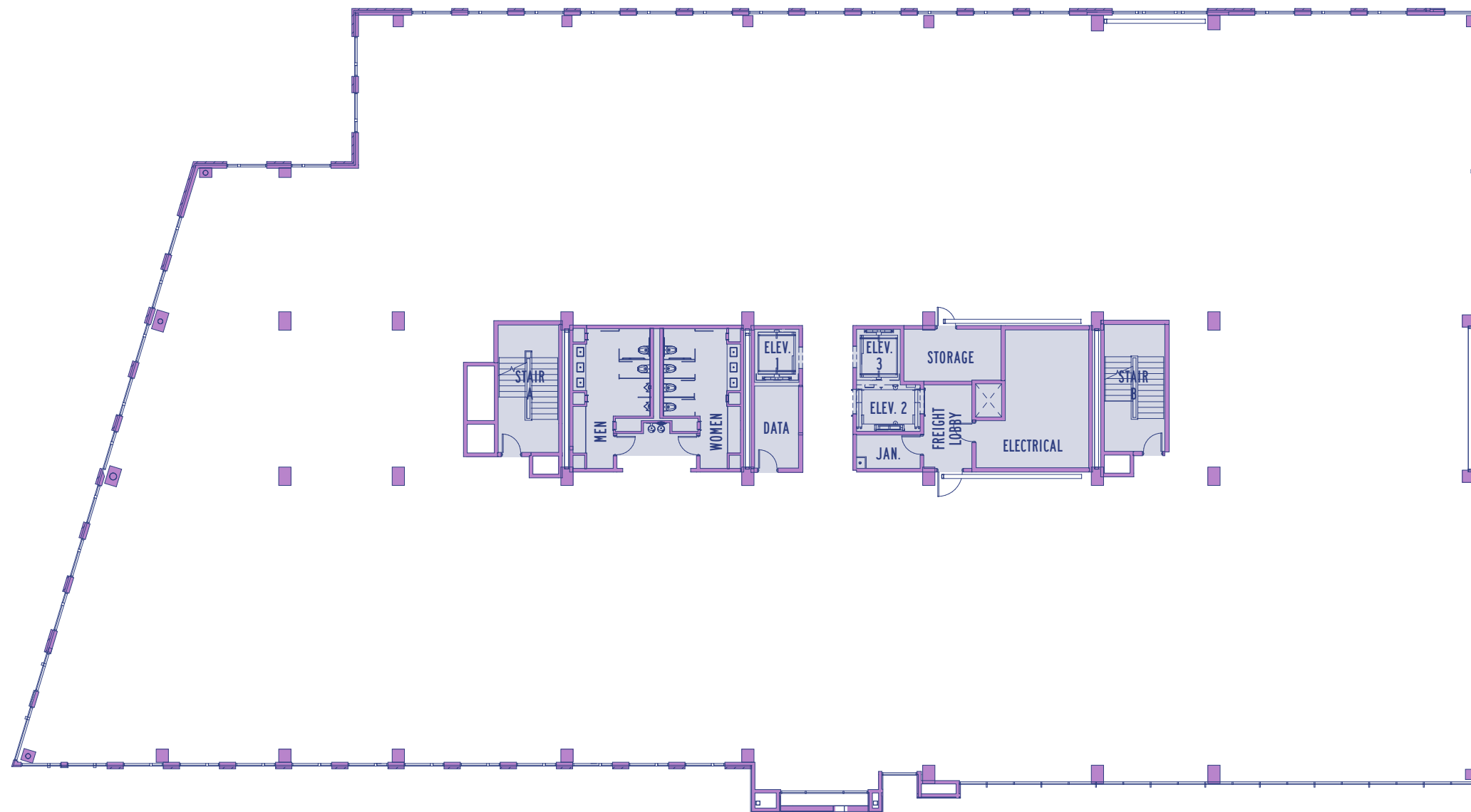
LEVEL 5 | 28,571 RSF





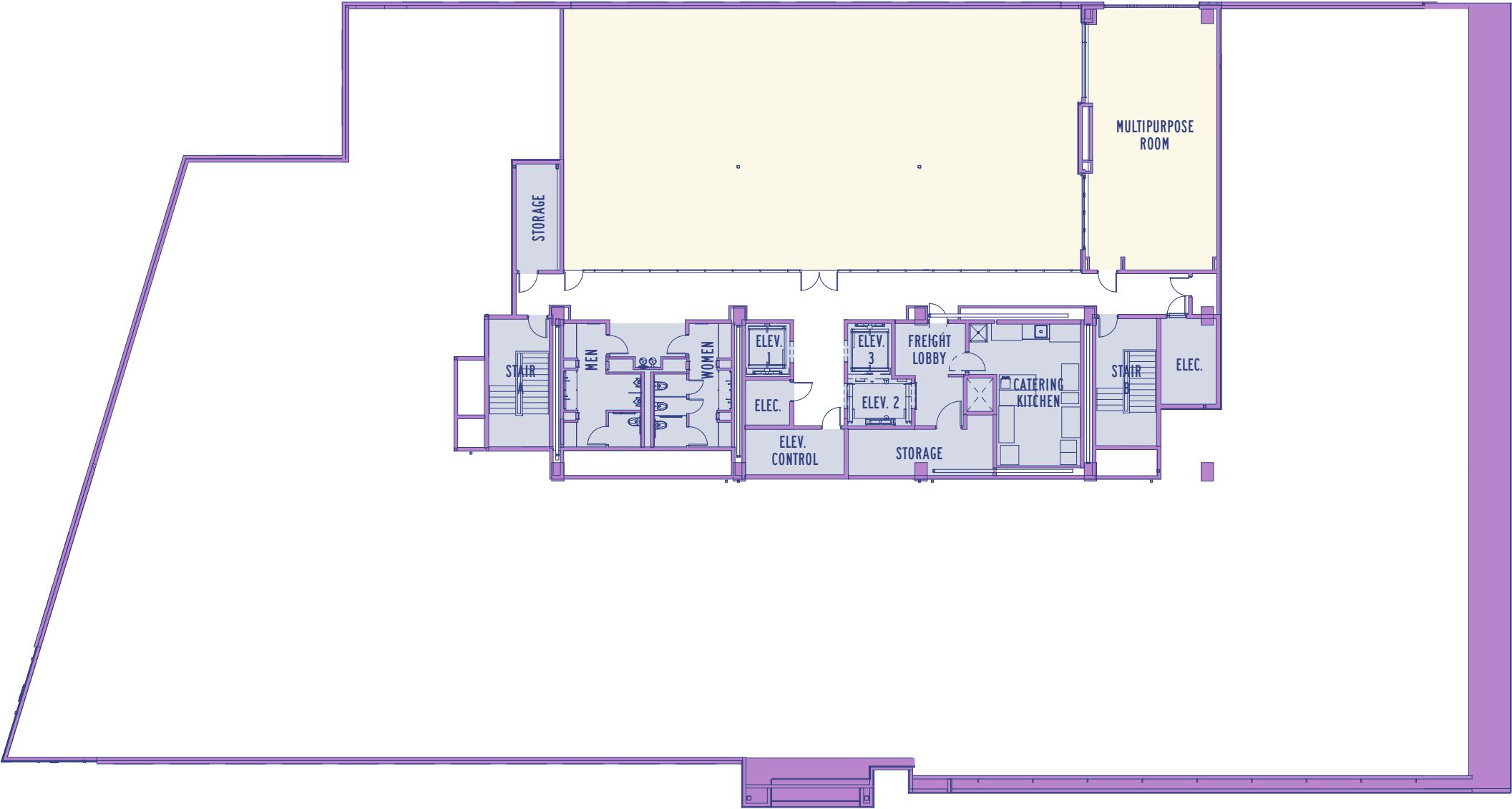
## OFFICE BUILDING

**LEVEL 6** | 28,571 RSF





LEVEL 7 | AMENITY FLOOR





# SURROUNDING AMENITIES



Community





---

FOR OFFICE LEASING INFORMATION, CONTACT:

**BARRY FABYAN**

(704) 907-2532

BARRY.FABYAN@STREAMREALTY.COM

**CHARLEY LEAVITT**

(704) 634-8254

CHARLEY.LEAVITT@STREAMREALTY.COM

---

LEASED & MANAGED BY



OWNED & DEVELOPED BY



**nuveen**

A TIAA Company